

Roadmap to a Safer Philadelphia: a public health approach to stop everyday “mass shootings”

Raynard Washington, PhD, MPH
Chief Epidemiologist

October 23, 2019

Firearm homicides in the last 20 years:

- 227,711 in the United States
- 5,461 in Philadelphia

So far in 2019, six mass shootings in Philadelphia

The toll: 2 dead, 30 injuries

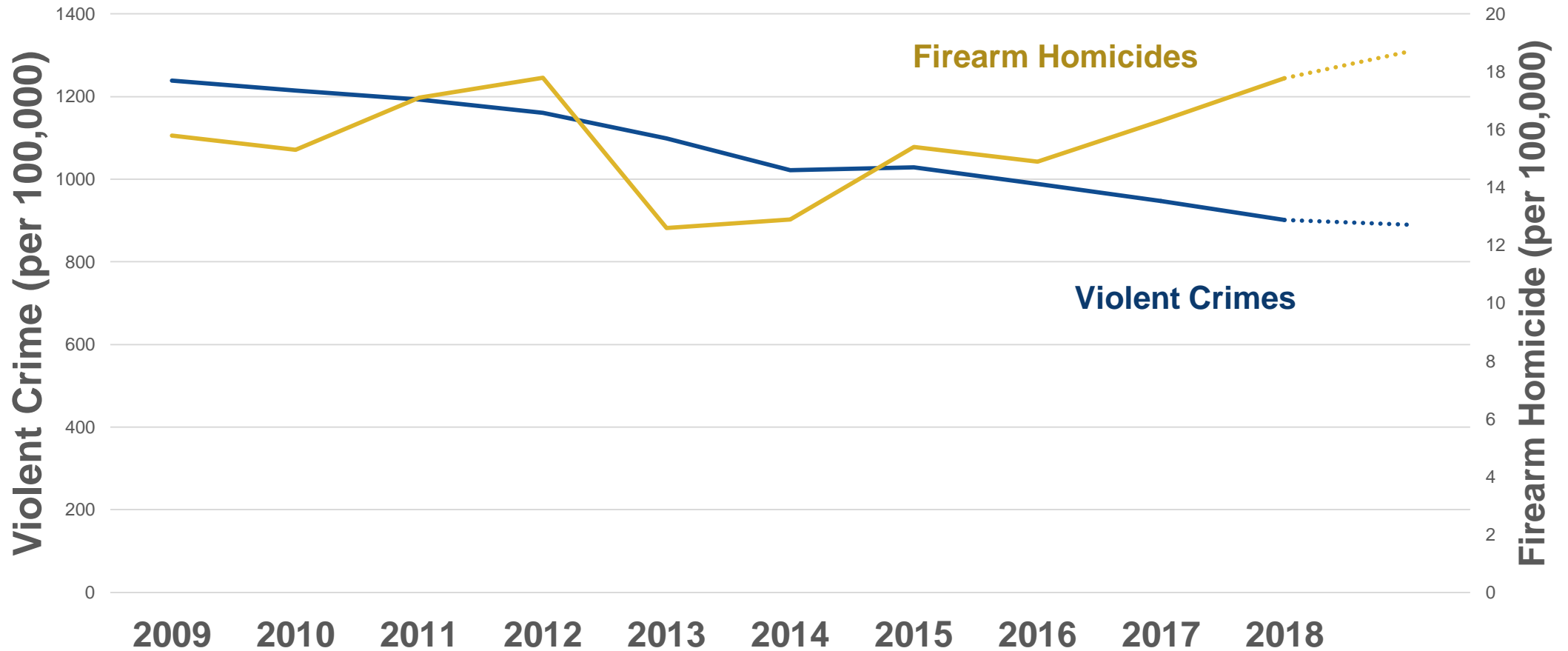
BY PHILLYVOICE STAFF



Homicide rates are declining in most major U.S. cities

City	# of Homicides	% Change	Per 100,000
Baltimore	343	+25	55.8
New Orleans	158	-16	40.4
Detroit	267	-36	39.7
Memphis	200	-28	30.6
Chicago	650	-112	24
Philadelphia	317	+40	20.2
Dallas	166	-5	12.6
Houston	269	-32	11.7
Los Angeles	286	-7	7.2
New York City	290	-45	3.4

Violent crime is declining, while homicide rate is highest in decade in Philadelphia



Mayor Kenney's Call to Action

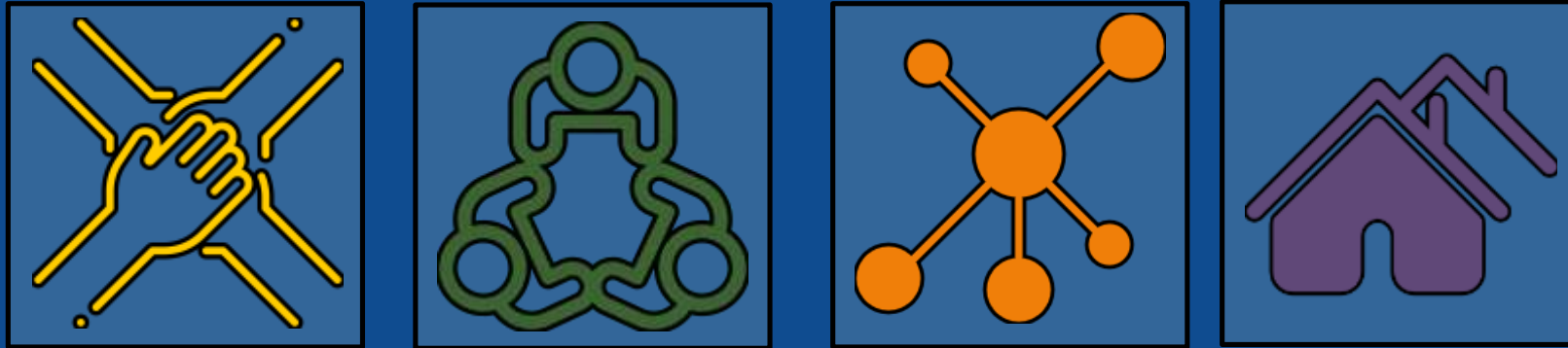
The Philadelphia Inquirer

NEWS SPORTS BUSINESS OPINION POLITICS ENTERTAINMENT LIFE FOOD HEALTH REAL ESTATE  

Mayor Kenney unveils initiatives to address gun violence

by [Chris Palmer](#), Updated: January 17, 2019

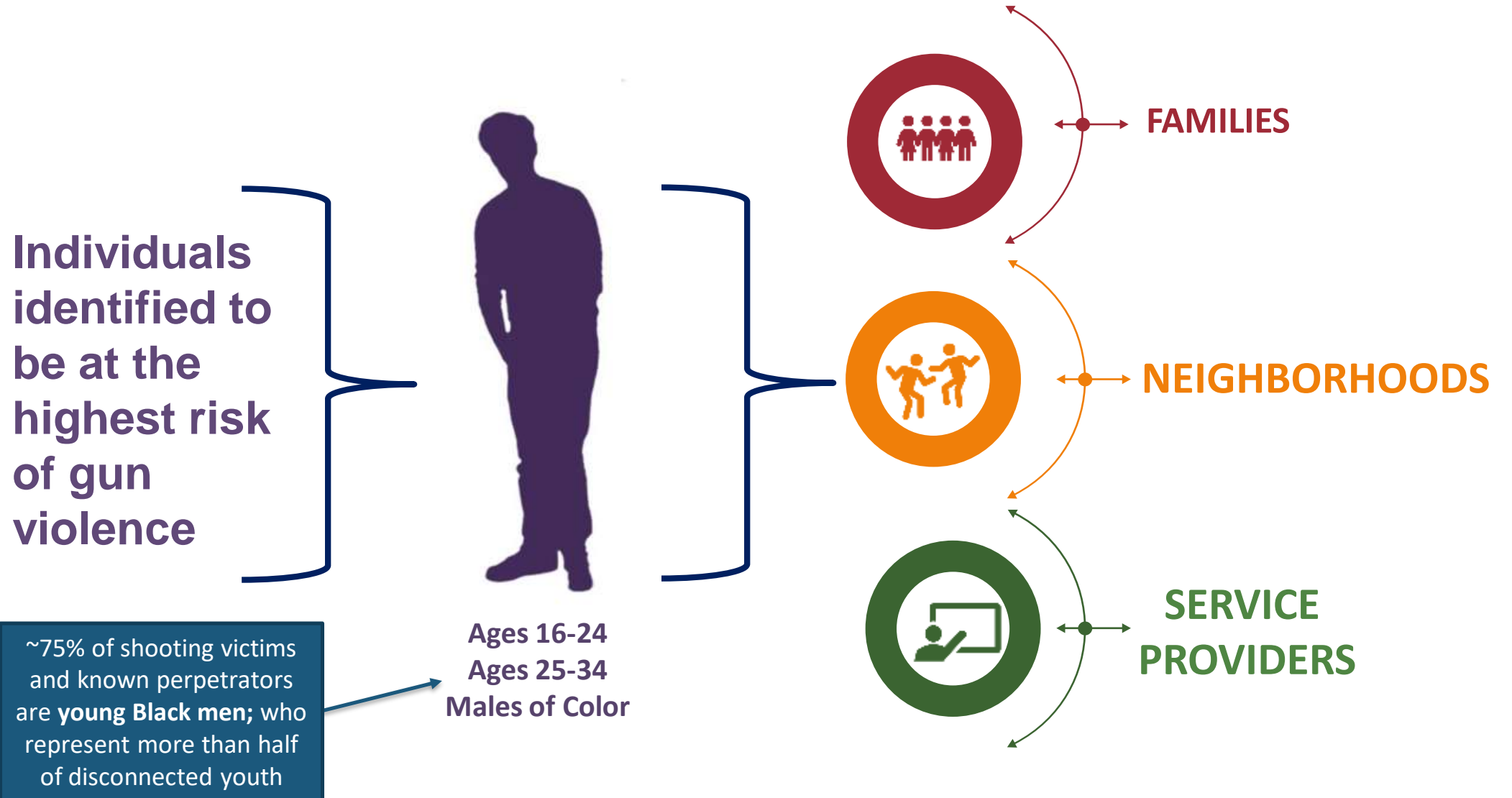
A photograph of Mayor Kenney speaking at a podium. He is wearing a dark suit and a yellow tie. In the background, a large screen displays a presentation with the Philadelphia Inquirer logo and the text "The Philadelphia Inquirer's Call to Action".



The Philadelphia Roadmap to Safer Communities

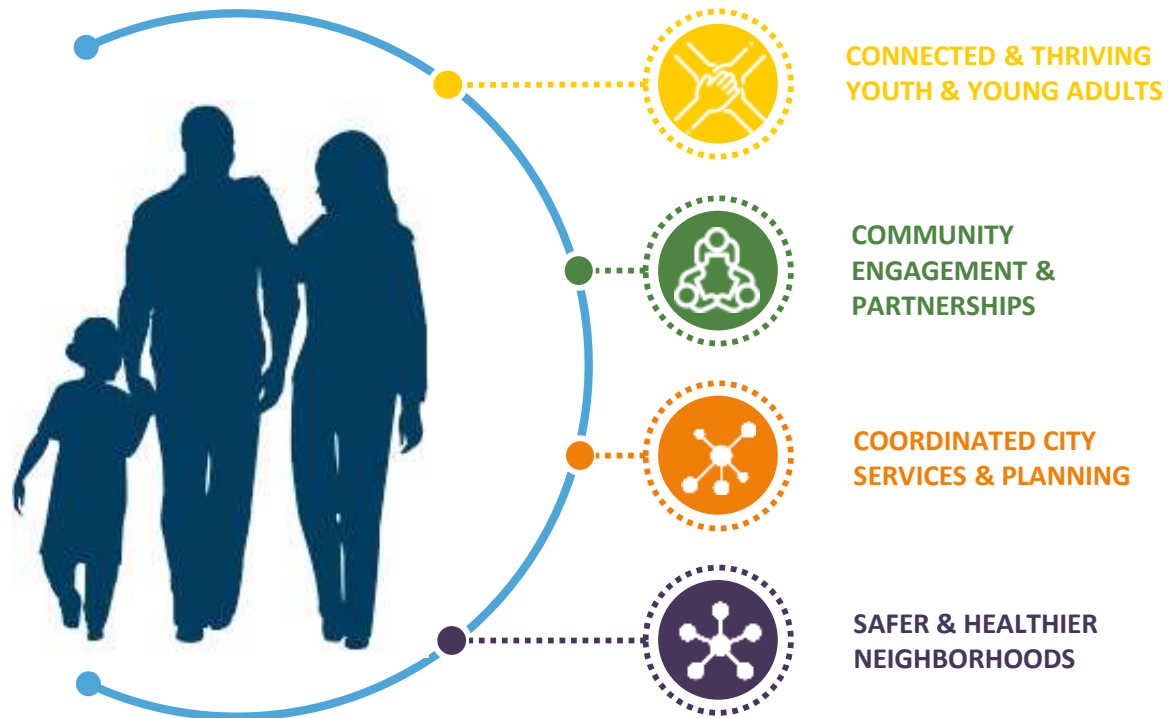
5-year Strategic Plan to Address Gun Violence in Philadelphia

A Public Health Approach



The Vision

Every Philadelphian will be safe from gun violence in their communities, with full access to opportunities to create their path to a fulfilling life.

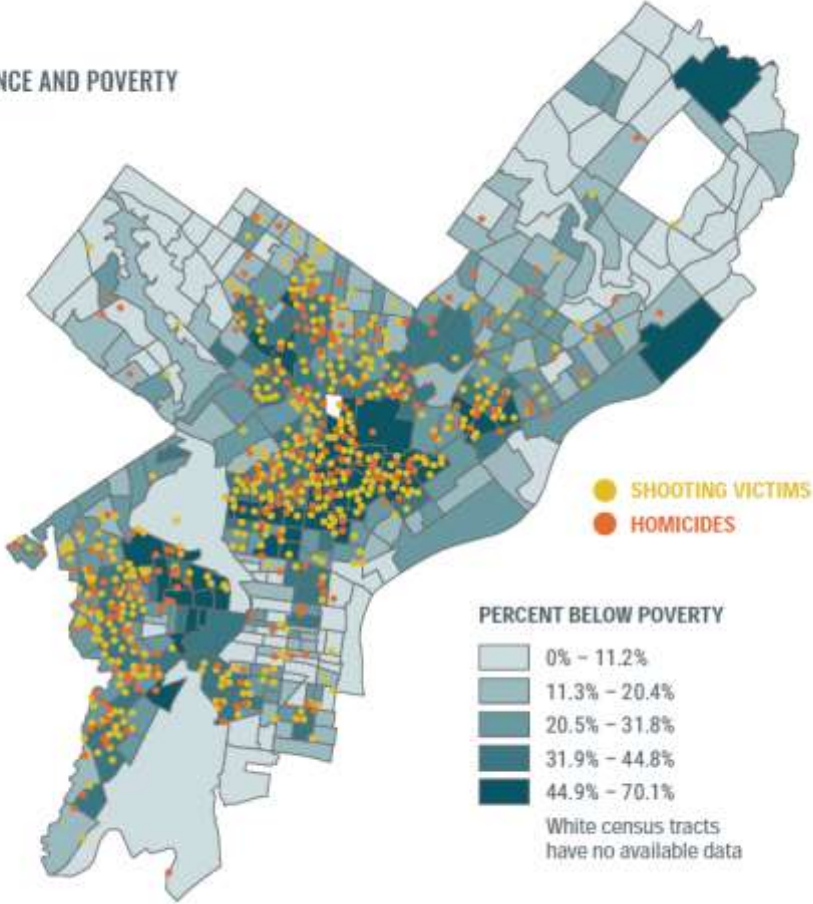


Further Understanding the Problem

In addition to the more than 300 fatal shootings, there are more than 1,100 non-fatal shootings each year

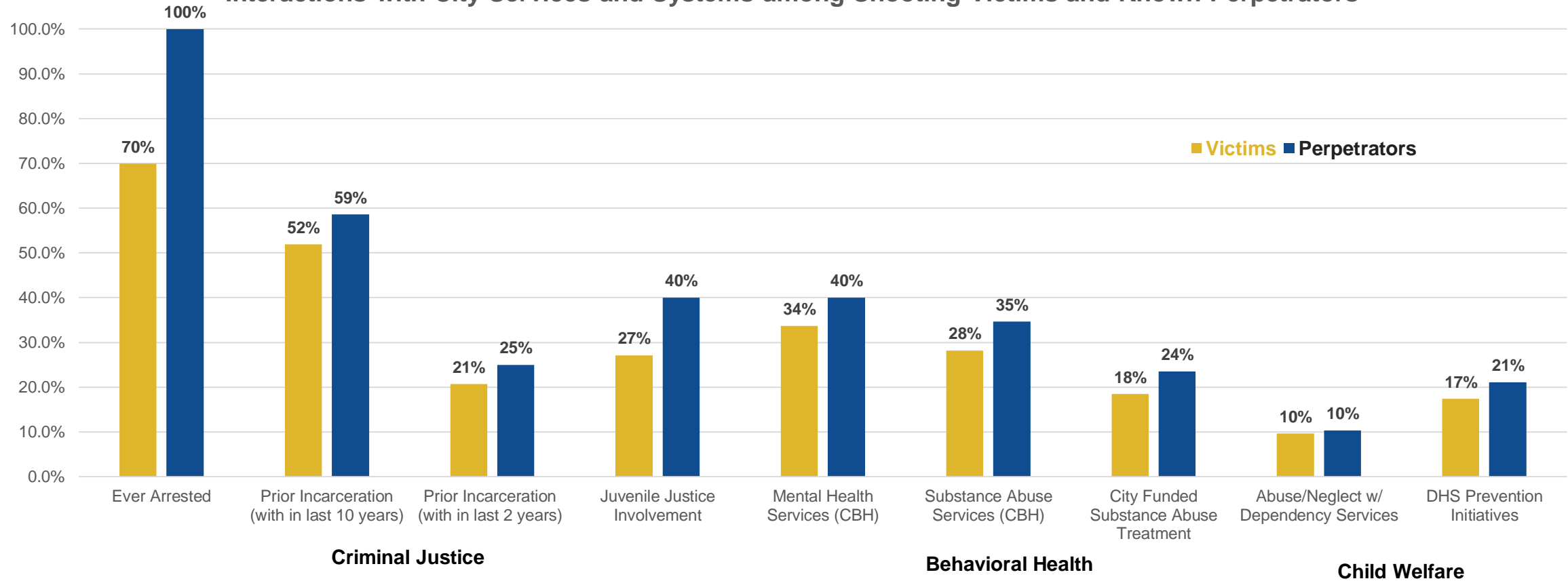
Shootings cluster in socioeconomically disadvantaged neighborhoods – highest rates of poverty, low education attainment, unemployment, and blight.

GUN VIOLENCE AND POVERTY

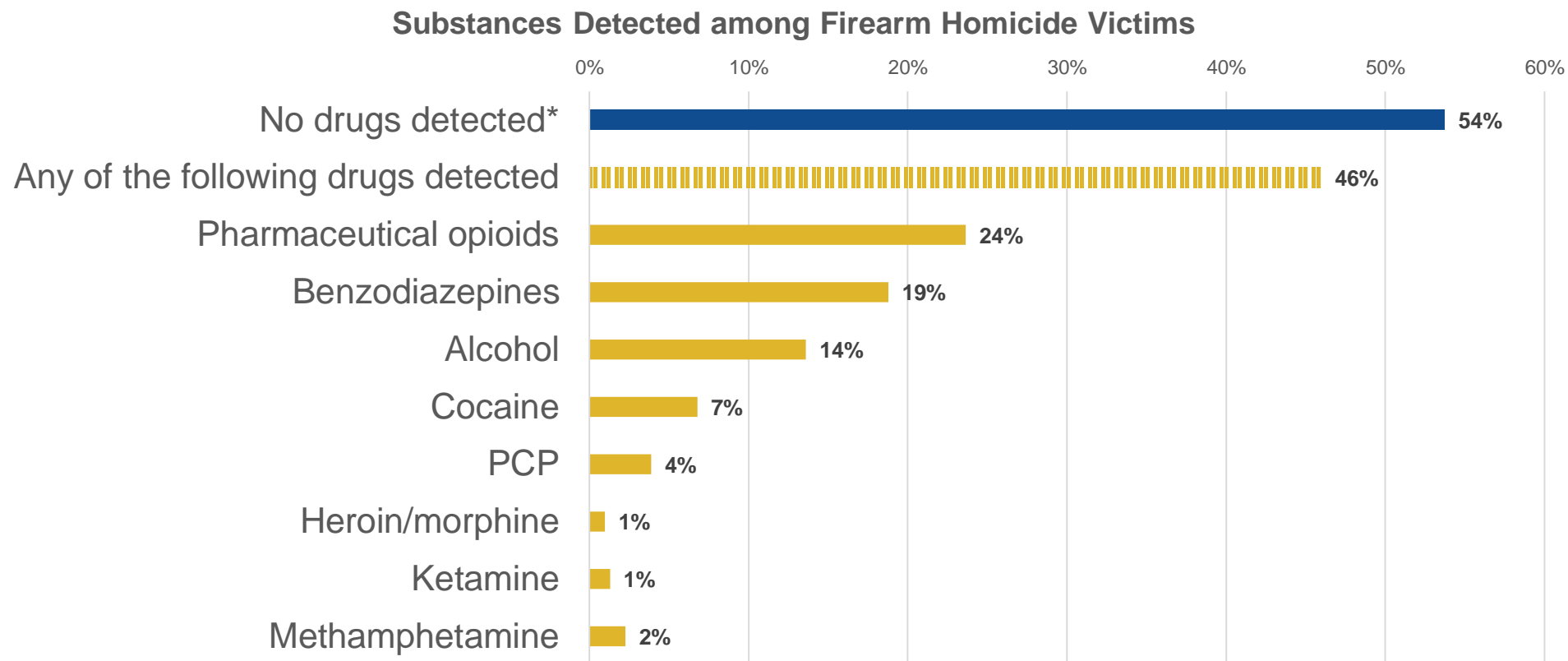


Individuals involved in gun violence often have complex social, behavioral, economic, and community circumstances

Interactions with City Services and Systems among Shooting Victims and Known Perpetrators



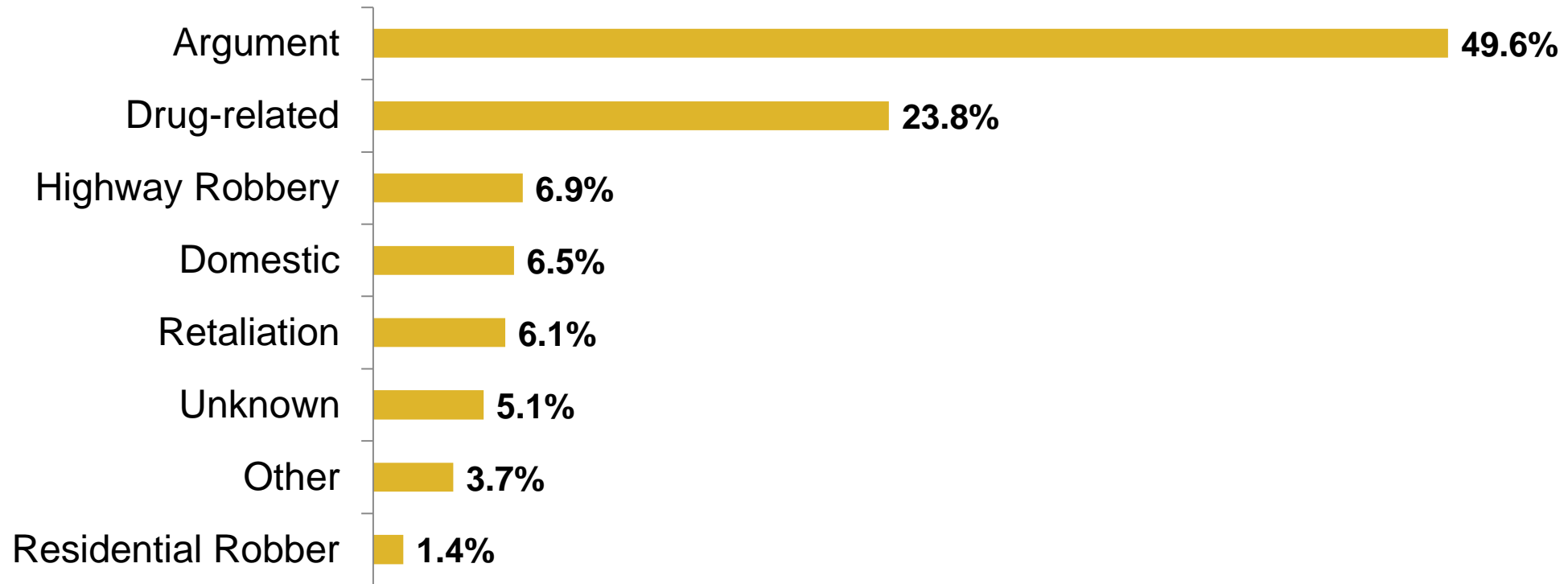
Almost half of firearm homicide victims used drugs or alcohol prior to death



*No drugs detected means that the drugs listed above were not detected--other drugs not included in this table may have been detected (e.g. seizure medication, antidepressants, etc)

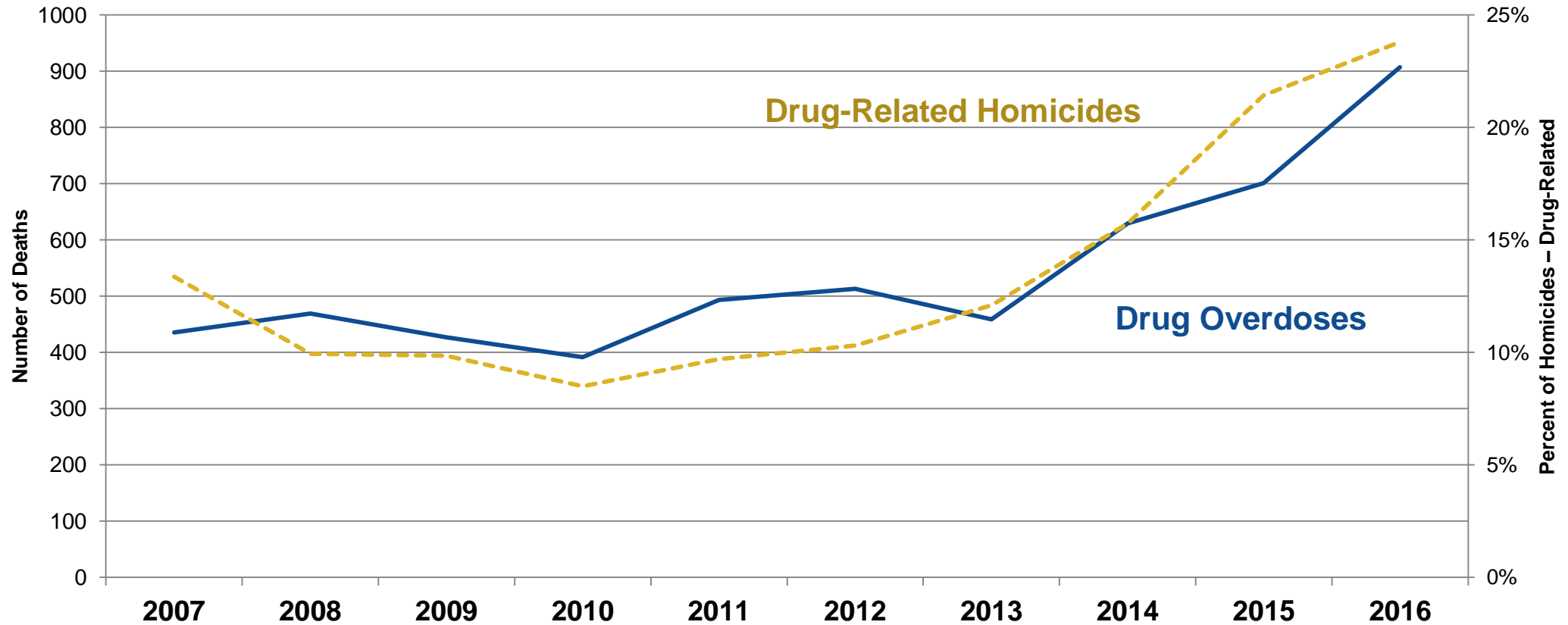
Nearly half of homicides involve an argument; nearly a quarter are drug-related

Motive in Homicides in Philadelphia

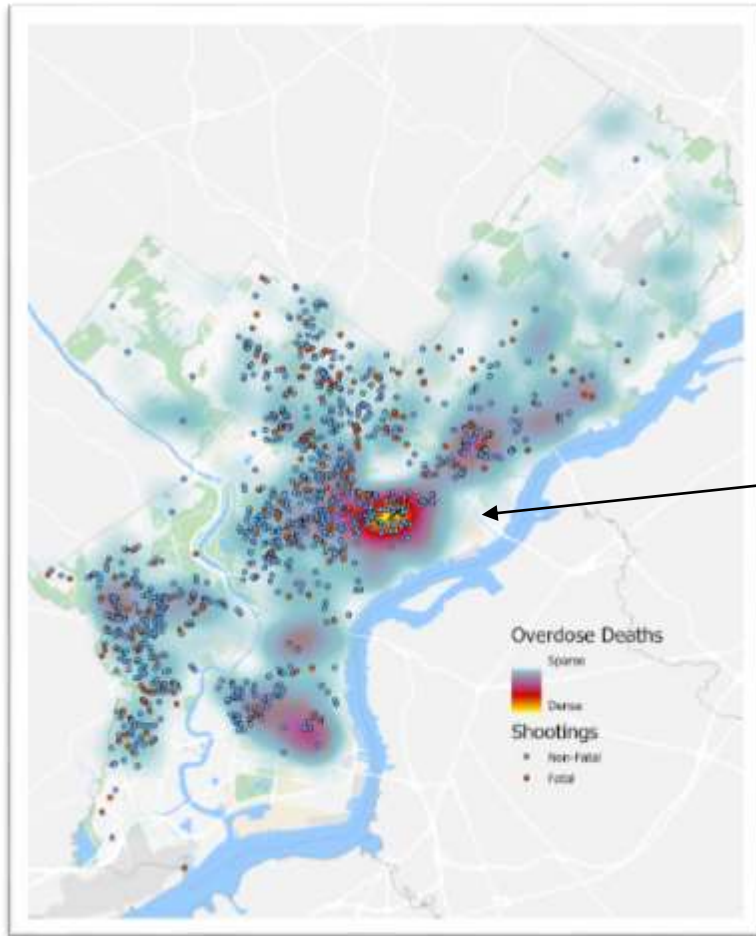


Recent drug-related homicide trends correspond with fatal drug overdose trends

Drug-Related Homicides and Drug Overdoses in Philadelphia



Neighborhoods with more fatal overdoses and drug activity also experience more shootings



CBSNEWS.COM

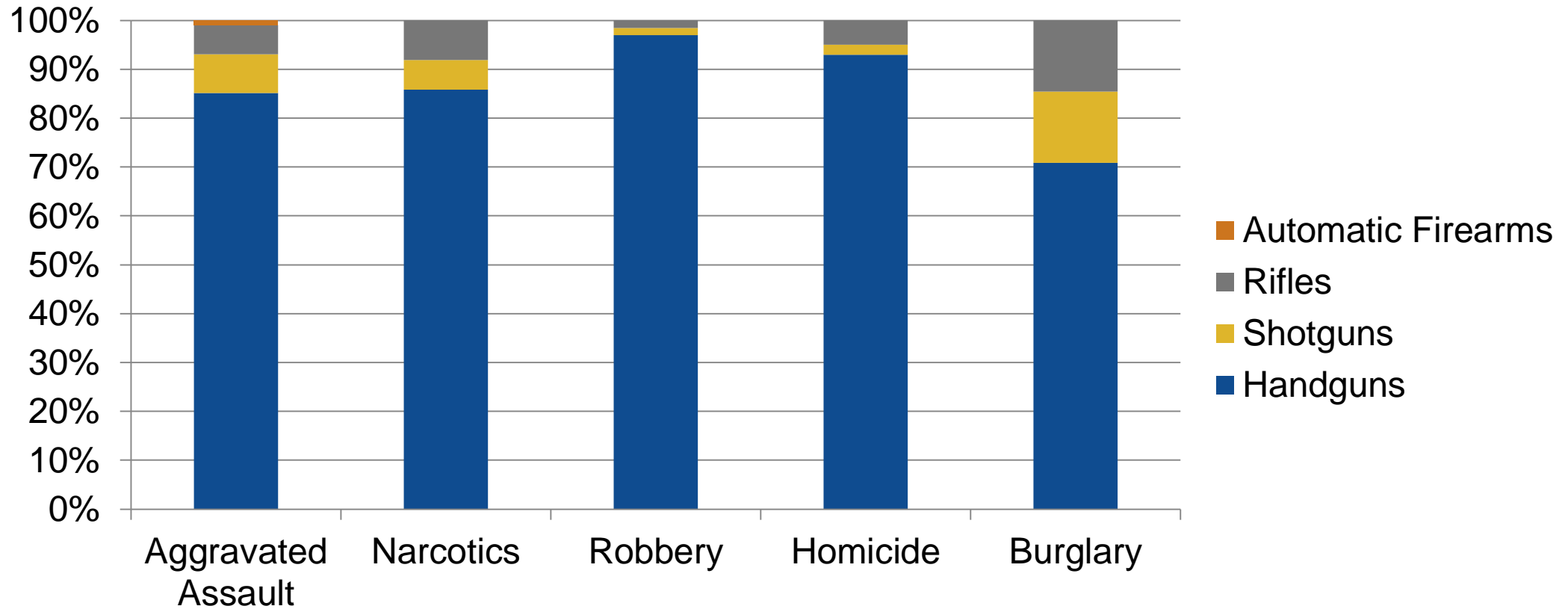
"The Walmart of Heroin": How a Philadelphia neighborhood became a case study in America's opioid crisis

Beyond the physical and emotional burden, firearm related injuries are very costly

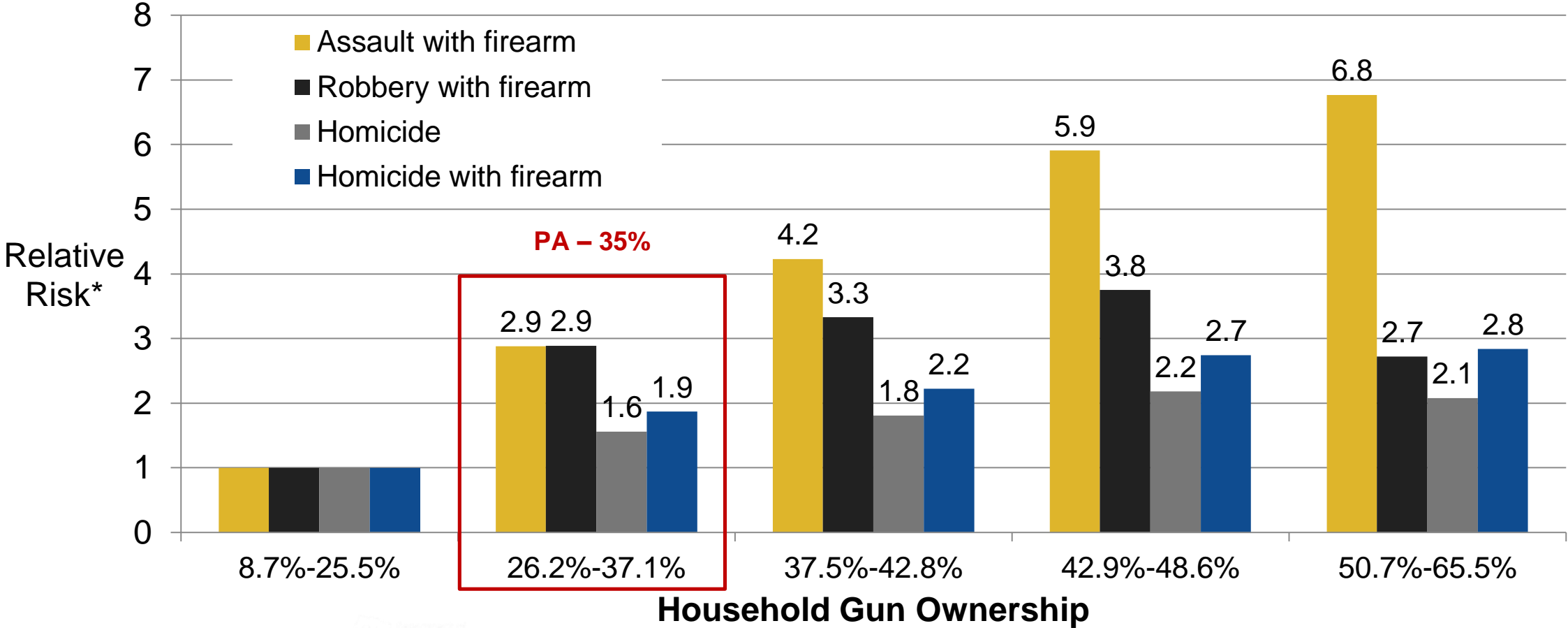
- A firearm homicide is associated with an estimated \$1.42 million in costs due to medical expenses, lost earnings/productivity, property damage, and criminal justice costs. **The 335 homicides in 2017 alone, is an estimated *\$476.6 million of economic burden to Philadelphia.***
- On average, a nonfatal firearm-related injury costs \$46,632ⁱ in lost productivity and medical expenses, including short term rehabilitation and post-admission follow-up. **The 1,205 nonfatal firearm assaults in 2017 alone is estimated to *cost Philadelphia more than \$102.8 million.***
- These costs can be significantly higher when firearm injuries result in long term disability.
- Much of the short- and long- term medical costs are paid for by the government with over **70 percent of firearm victims in Philadelphia being covered by Medicaid.**

Of ~3,000 crime guns confiscated each year by police, 90% are handguns

Firearm Confiscated in Philadelphia by Crime Type



States with more gun ownership have more gun injuries; local gun laws are pre-empted by PA state



Recommendations

Key Recommendations to the Mayor

Use police, health, and other data to better identify the people and places driving the violence in communities and **more effectively target policies, programs and services** to address these issues



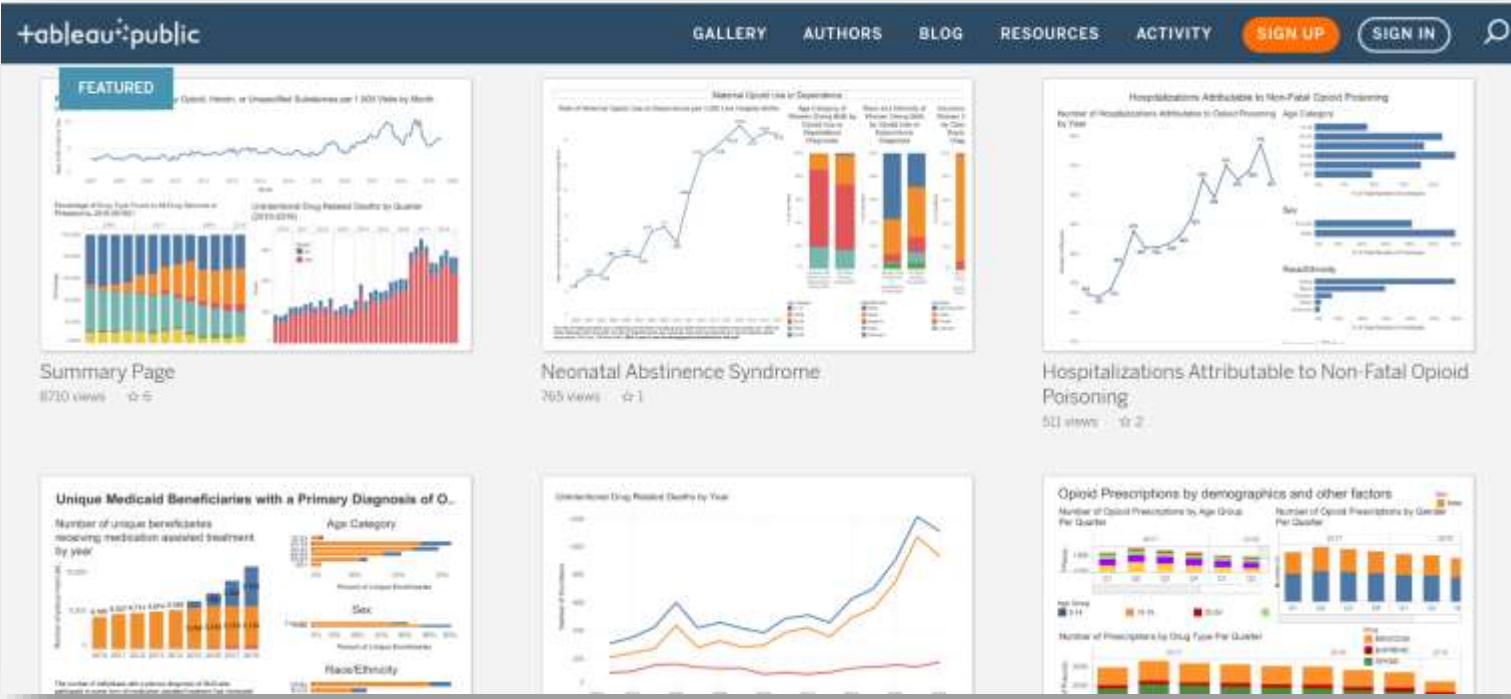
Invest in additional **analytical capacity and technology** to implement “Operation Pinpoint”

Build on the administration’s successful criminal justice reforms by improving reentry programs and services

Core Public Health Strategies in PRSC

Build an Injury Prevention Program to:

- 1. Develop a public-facing data dashboard of key violence prevention metrics



Core Public Health Strategies in PRSC

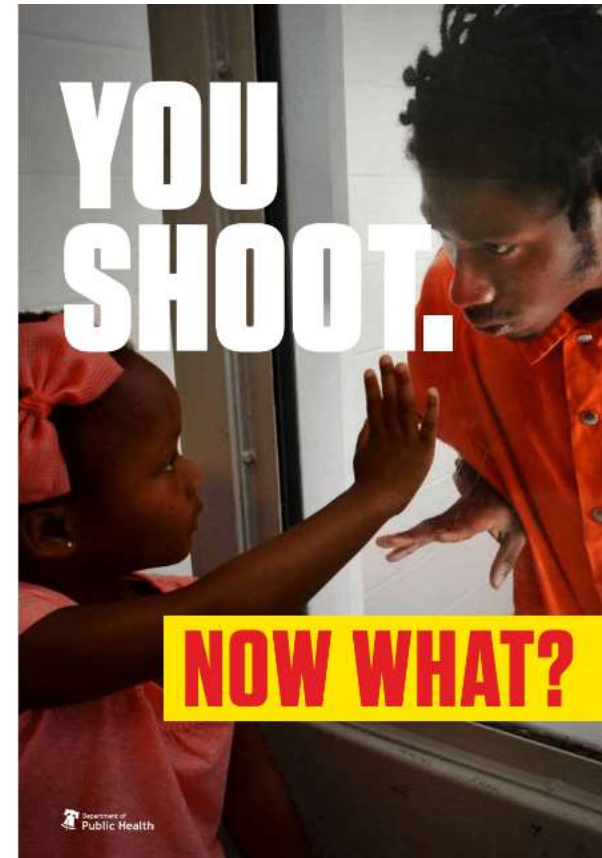
Build an Injury Prevention Program to:

1. Develop a public-facing data dashboard of key violence prevention metrics
2. Produce evidence to inform the overall strategy and advocacy efforts, including data to drive decision-making and impact evaluation of strategic initiatives
3. Convene a Firearm Homicide and Injury Review Team
4. Embed a public health epidemiologist at Philadelphia Police Department joint intelligence bureau
5. Support tactical strategies to identify environment deterrents to safe communities, like nuisance restaurants, vacant lots, other neighborhood blight
6. Develop a public health violence prevention media campaign

First Public Health Campaign

Rationale: High risk individuals are not always committed to shooting others. It may be possible to redirect them.

Objectives: To reduce shootings by persuading high-risk persons to consider the adverse consequences of shooting and choose alternative ways of addressing conflict. The campaign aims to deliver an effective media message to high risk individuals through public postings and credible messengers.



Overall PSRC Progress



CONNECTED & THRIVING YOUTH, YOUNG ADULTS, & FAMILIES

1. Expanded the weekend hours of operation at 12 recreation centers serving Pinpoint areas
2. Increased community crisis intervention teams from 7 to 22.
3. Additional \$1M allocated for Summer WorkReady
4. New transitional jobs program for older youth and young adults impacted by gun violence



STRONG COMMUNITY ENGAGEMENT & PARTNERSHIPS

5. Awarded over \$700,000 to grassroots community groups to address gun violence
6. Increased the number of Town Watch Integrated Services groups



COORDINATED CITY SERVICES & PLANNING

7. Weekly tactical group to align City resources with needs in Pinpoint areas
8. Hired new staff for key positions
9. Board of Health Regulation for the Firearm Homicide and Injury Review Team



SAFER & HEALTHIER NEIGHBORHOODS

10. Improving environmental conditions by expanding teams for cleaning, greening, and maintenance of vacant lots and sealing abandoned buildings
11. Joint action teams with Licenses & Inspections, Liquor Control Board, Police, and Public Health to close nuisance establishments



Thank you

Raynard.Washington@phila.gov

 Raynard_W